



SHEET METAL CONNECTORS, INC.

MINNEAPOLIS, MN
 5850 Main Street N.E.
 Minneapolis, Minnesota 55432
 LOCALLY CALL: 763-572-0000
 TOLL FREE: 1-800-328-1966
 FAX: 763-572-1100

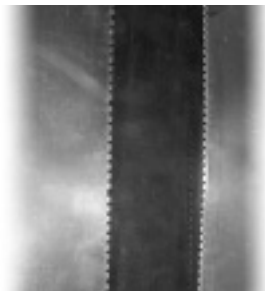
www.smcduct.com

ROCKFORD, IL
 5601 Sandy Hollow Road
 Rockford, Illinois 61109
 LOCALLY CALL: 815-874-4600
 TOLL FREE: 1-866-504-4600
 FAX: 815-874-9979

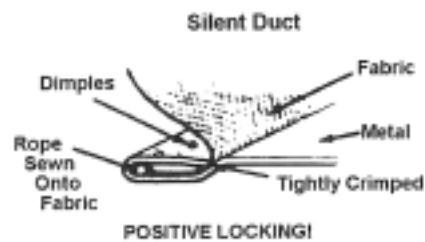


Submittal Sheet

SPECIAL FABRICS FLEXIBLE DUCT CONNECTOR



Construction:
 A double folded
 Fabric/Metal Connector,
 notched for easy fabrication.



Description: Flexible duct connections are installed between the air handling equipment and the sheet metal air distribution system. This connection eliminates vibration noise in the air system.

Fabric Comparisons	SUPER Hi-Temp	Neoprene - H.D. 40 oz.
Continuous Temp Range	1800° F	285° F
Color	Gray/White	Black
Weight Per Sq. Yd.	36 oz.	40 oz.
Composition	Silica Fabric with one side silicone coated	Neoprene Coated Fiberglass
Tear Strength	60/60	17/12
Tensile Strength	480/300	630/465
Features	May be used in exhaust systems and this fabric is the best hi-temp fabric.	Best fabric for high pressure and for very large duct where blowout or pullout may occur. Strongest fabric Hydrostatic Resistance ≥ 600 psi.
Codes: North Lock Silent Duct	ZLHT SDHT	ZLN-HD SDN-HD

2-1.1 exc. no 3 Vibration isolation connectors in duct system shall be made of an approved flame retardant fabric or shall consist of sleeve joints with packing of approved non-combustible material. Vibration isolation connectors constructed of fabric shall not exceed 10 inches in length. – **NFPA No. 90B 1980.**

2-1.2-3 Vibration isolation connectors in duct systems shall be made of an approved flame retardant fabric or shall consist of sleeve joints with packing of approved material having a flame spread rating of not over 25 and a smoke development rating of not over 50. Vibration isolation connectors constructed of fabric shall not exceed 10 inches in length. – **NFPA No. 90A 1981.**