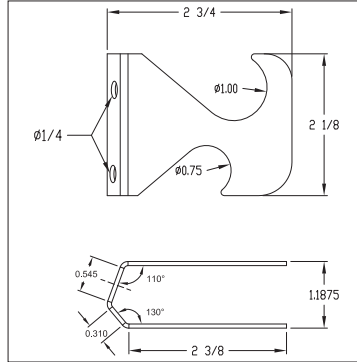


CONDUIT CROSS-CLAMP



Product Data Sheet



Description

Elgen's Conduit Cross Clamp used in fastening the conduit together when they are near from two directions inside a rectangular ductwork.

Features

Provide a secure and tight fit for 1/2" or 3/4" conduit connections

Standard Construction

Manufactured using 14 GA zinc-plated steel

Hex Head Bolt- 1/4-20 x 11/16" Grade 2 zinc plated steel

Packaging

Stud Size	Qty Per Box
1/2" or 3/4"	250

Guarantee

All Elgen products are guaranteed by Elgen Manufacturing against defective material.

Elgen Manufacturing
10 Railroad Ave, Closter NJ 07624
Tel: 800.503.9805 :: Fax: 201.964.9030
info@elgenmfg.com :: www.elgenmfg.com



SHEET METAL CONNECTORS, INC.

MINNEAPOLIS, MN
5850 Main Street N.E.
Minneapolis, Minnesota 55432
LOCALLY CALL: 763-572-0000
TOLL FREE: 1-800-328-1966
FAX: 763-572-1100

www.smcdct.com

ROCKFORD, IL
5601 Sandy Hollow Road
Rockford, Illinois 61109
LOCALLY CALL: 815-874-4600
TOLL FREE: 1-866-504-4600
FAX: 815-874-9979



Submittal Sheet

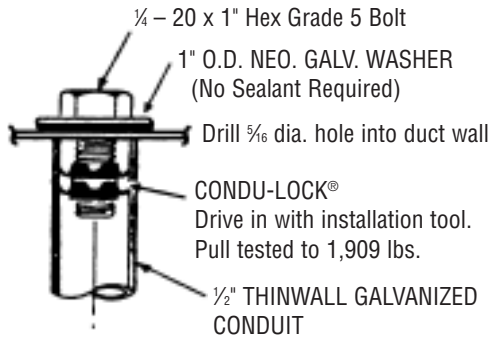
Tie Rod Reinforcement

Sheet Metal Connectors Tie Rod Reinforcements are available Cut-To-Length. Manufactured using 1/2" electrical conduit (EMT) with 5/16" threaded inserts installed on each end. These Tie Rod Reinforcements are used for both mid panel and joint reinforcement. When using internal tie rods you may reduce the thickness of the duct wall. Always refer to SMACNA recommendations. Tie rods are also available in 3/4". Other lengths and diameters available, consult factory for prices.



Condu-Lock

Condu-Locks are threaded inserts that are installed into the ends of electrical conduit (EMT). They are available for both 1/2" and 3/4" EMT. Cut the conduit to duct size. Drive the Condu-Lock into each end using the installation tool. Then install into duct.

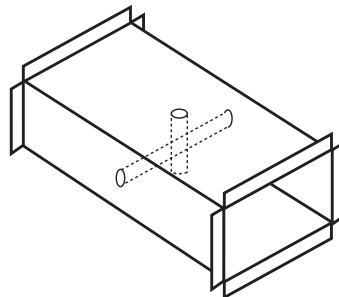


Quantity per Package	
1/2"	100 ea.
3/4"	100 ea.

EMT	
1/2" x 10'	Length
3/4" x 10'	Length

T-Lock ConduClamp

When tie rods occur in two directions in the same vicinity, they can be permanently fastened together using ConduClamp. ConduClamps are for both 1/2" and 3/4" EMT.

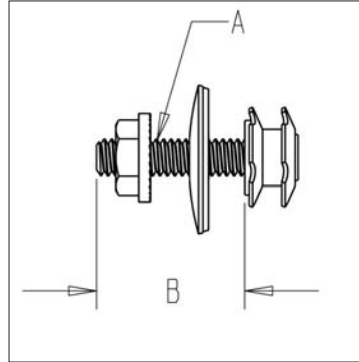


Size
1/2"
3/4"

STUD INSERTS



Product Data Sheet



Features

Neoprene/Metal washer to create airtight seal

Optional Construction

Stainless Steel 304
Stainless Steel 316

Description

Elgen's Stud Inserts are used in conjunction with metal EMT or conduit to provide internal rectangular duct support.

Please see Elgen's Rectangular Duct Construction Standards with use of Conduit inserts for selection of appropriate size.

Standard Construction

1/2" conduit (for duct up to 36" in width)

3/4" conduit (for duct over 36" in width)

Hex Head Bolt- 1/4-20 x 1" Grade 2
zinc plated steel

1/4" Flat washer with neoprene gasket

1/4" "Star" Nut

Testing Results

Pull Out Test		
Tube Connector	Load to 1/16" Pull Out	Load to Failure
1/2"	1500 - 2000	2000 - 2200
3/4"	1900 - 2400	2300 - 2600

Torque Test	
Tube Connector	Maximum Torque
1/2"	70 in - lbs (nut spins)
3/4"	70 in - lbs (nut spins)

Packaging

Size A	Length B	Box Qty	Weight (lbs)
1/2"	1"	1,000	42
3/4"	1"	1,000	42

Guarantee

All Elgen products are guaranteed by Elgen Manufacturing against defective material.

Elgen Manufacturing
10 Railroad Ave, Closter NJ 07624
Tel: 800.503.9805 :: Fax: 201.964.9030
info@elgenmfg.com :: www.elgenmfg.com