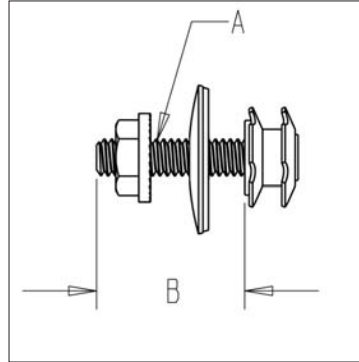


STUD INSERTS



Product Data Sheet



Features

Neoprene/Metal washer to create airtight seal

Optional Construction

Stainless Steel 304
Stainless Steel 316

Description

Elgen's Stud Inserts are used in conjunction with metal EMT or conduit to provide internal rectangular duct support.

Please see Elgen's Rectangular Duct Construction Standards with use of Conduit inserts for selection of appropriate size.

Standard Construction

1/2" conduit (for duct up to 36" in width)

3/4" conduit (for duct over 36" in width)

Hex Head Bolt- 1/4-20 x 1" Grade 2
zinc plated steel

1/4" Flat washer with neoprene gasket

1/4" "Star" Nut

Testing Results

Pull Out Test		
Tube Connector	Load to 1/16" Pull Out	Load to Failure
1/2"	1500 - 2000	2000 - 2200
3/4"	1900 - 2400	2300 - 2600

Torque Test	
Tube Connector	Maximum Torque
1/2"	70 in - lbs (nut spins)
3/4"	70 in - lbs (nut spins)

Packaging

Size A	Length B	Box Qty	Weight (lbs)
1/2"	1"	1,000	42
3/4"	1"	1,000	42

Guarantee

All Elgen products are guaranteed by Elgen Manufacturing against defective material.

Elgen Manufacturing
10 Railroad Ave, Closter NJ 07624
Tel: 800.503.9805 :: Fax: 201.964.9030
info@elgenmfg.com :: www.elgenmfg.com